

THE ROYAL PHOTOGRAPHIC SOCIETY

# THE STRUCTURE OF CREATIVE INDUSTRIES AND IMAGING SCIENCE QUALIFICATIONS

DISTINCTIONS AND QUALIFICATIONS GUIDELINES

# Contents

<b>CREATIVE INDUSTRIES QUALIFICATION.....</b>	<b>2</b>
QUALIFICATIONS ARE AWARDED AT FOUR LEVELS .....	2
EVIDENCE .....	2
STANDARDS.....	3
QUALIFIED IN IMAGING FOR THE CREATIVE INDUSTRIES (QICI & LRPS) .....	3
GRADUATE IN IMAGING IN THE CREATIVE INDUSTRIES & ASSOCIATE (GICI AND ARPS) .....	3
ACCREDITED IN IMAGING IN THE CREATIVE INDUSTRIES AND ASSOCIATE (AICI & ARPS) .....	3
ACCREDITED SENIOR IMAGING IN CREATIVE INDUSTRIES AND FELLOW (ASICI & FRPS) .....	3
EXEMPTIONS .....	3
NATIONAL OCCUPATIONAL STANDARDS.....	3
QUALIFICATIONS BOARD FOR THE CREATIVE INDUSTRIES.....	4
<b>IMAGING SCIENCE QUALIFICATIONS .....</b>	<b>5</b>
QUALIFICATIONS ARE AWARDED AT FOUR LEVELS: .....	5
EVIDENCE .....	5
STANDARDS.....	5
QUALIFIED IMAGING SCIENTIST & LICENTIATE (QIS & LRPS).....	6
GRADUATE IMAGING SCIENTIST & ASSOCIATE (GIS & ARPS).....	6
ACCREDITED IMAGING SCIENTIST & ASSOCIATE (AIS & ARPS).....	6
C1.3.4 ACCREDITED SENIOR IMAGING SCIENTIST & FELLOW (ASIS & FRPS) .....	6
EXEMPTIONS .....	6
QUALIFICATIONS BOARD FOR IMAGING SCIENCE .....	6
<b>PATHWAYS TO IMAGING SCIENTIST QUALIFICATIONS.....</b>	<b>7</b>
<b>EXPERIENTIAL PATHWAYS TO IMAGING SCIENTIST QUALIFICATIONS.....</b>	<b>8</b>
PROGRESS BETWEEN LEVELS .....	8

## CREATIVE INDUSTRIES QUALIFICATION

**The Royal Photographic Society's Imaging for the Creative Industries qualification provides a structure leading to professional qualifications with particular relevance for those in the media including picture editors, art directors, curators and designers, as well as those within elements of education.**

This provides a Qualification for educators in relevant academic disciplines from the fine arts to design as well as their applications. It includes areas of photography and imaging that embrace those who make and those who use the medium.

The Qualification may be gained by members of The Society working within relatively narrow specialisations but their achievements will require a range of widely applicable professional skills. Candidates are required to demonstrate at an appropriate level, and as required by their particular professional circumstances, an ability to plan and undertake some form of project as an individual or part of a team, making, using or publishing images, through to successful completion.

Members who acquire an Imaging for the Creative Industries Qualification will also receive a Society Distinction. Graduates who become members of The Society may well opt to use the Qualifications route rather than the Distinctions route for exemption. CIQ status only continues whilst the person is professionally active, whether in full time employment or fully retired and is a member of The Society. Professional activity includes one (or more) of the following:

- Professional activity (e.g. involvement in a professional body by serving on committees, attending meetings, mentoring).
- Work based learning (e.g. consultancy, supervising staff/students, external examining, reflective practice).
- Formal/Educational (e.g. writing articles/papers, further education).
- Self-directed learning (e.g. reading journals, reviewing books/refereeing articles).
- Other (e.g. voluntary work, public service).

Members who terminate qualified membership, on ceasing to be professionally active, may retain The Society Distinction as long as they remain paid up members of The Society.

### QUALIFICATIONS ARE AWARDED AT FOUR LEVELS:

- **Level 1:** (QICI & LRPS) Qualified in Imaging in the Creative Industries & Licentiate: for those with academic qualifications below degree level.
- **Level 2:** (GICI & ARPS) Graduate in Imaging in the Creative Industries and Associate: for undergraduates, and relevant Professional experience.
- **Level 3:** (AICI & ARPS) Accredited in Imaging in the Creative Industries & Associate: for those with postgraduate experience in the creative industries.
- **Level 4:** (ASICI & FRPS) Accredited Senior in Imaging in the Creative Industries & Fellowship: the senior professional qualification.

Candidates with a valid claim for entry to a higher level need not proceed through the lower Levels.

### EVIDENCE

The evidence required in support of applications for Qualifications will normally be in four parts:

- Documentary evidence of prior academic qualifications. In certain cases this requirement may be replaced by a longer period of relevant experience.
- A statement of experience as a professional in the creative industries.
- A full curriculum vitae.
- Statements from referees which will allow the extent, level, scope, and experience of the candidate in creative industries to be assessed. Where a mentor (see supervision below) has been appointed, his/her report must be included.

## STANDARDS

For each level of Qualification there are three basic requirements. The descriptions below are not prescriptive but are intended to give a general indication of the level required.

### QUALIFIED IN IMAGING FOR THE CREATIVE INDUSTRIES (QICI & LRPS)

- Foundation degree in Art, Design or Media or the equivalent.
- One year of relevant experience.
- Normally; the candidate will have performed work of a non-routine nature, which may have been directed by a senior colleague, produced accurate records, written proposals, reports or presentations as an individual or part of a team, and may have directed the work of others.

### GRADUATE IN IMAGING IN THE CREATIVE INDUSTRIES & ASSOCIATE (GICI AND ARPS)

- A suitable degree in Art, Design or Media or the equivalent.
- One year of relevant experience where the candidate has an honours degree and two years of relevant experience where the candidate has a pass degree.
- Normally; the candidate will have made a useful contribution to the work of a team and may have directed the work of a technician.

### ACCREDITED IN IMAGING IN THE CREATIVE INDUSTRIES AND ASSOCIATE (AICI & ARPS)

- Five years of relevant experience post QICI or three years of relevant experience post GICI. Where the candidate has neither qualification, nine years of relevant experience will be accepted instead.
- As GICI, but more evidence reflecting the years involved. Normally, the candidate will have generated and completed an individual project, such as creating or using published images, and involvement with publishing work. The Qualifications Board will expect to see evidence of independent work.

### ACCREDITED SENIOR IMAGING IN CREATIVE INDUSTRIES AND FELLOW (ASICI & FRPS)

NOTE: The ASICI Qualification was conceived as equivalent to having Chartered status.

- Five years of relevant experience post AICI. Alternatively, nine years of relevant experience post GICI or eleven years post QICI. Where the candidate has none of the above qualifications, fourteen years of relevant experience will be accepted instead.
- Individual work of a high standard, which has shown originality. The Qualifications Board will expect to see evidence of a broad involvement in the creative industries beyond a narrow specialism.

## EXEMPTIONS

Members of The Royal Photographic Society who are also members of other professional or learned bodies and hold equivalent qualifications may apply for AICI (e.g. ABIPP or MCSD) or for ASCI (e.g. FBIPP or FCSD) provided that they have a sufficient period of appropriate work experience in the creative industries. This could encompass parallel discrete disciplines involved with art, design and media and this should be interpreted widely as should its relevance to other professional bodies (such as the British Institute of Professional Photography, British Kinematograph, Sound & Television Society, and the Chartered Society of Designers). In these cases, only evidence of the exempting qualification, a statement of relevant experience, a curriculum vitae and an independent referee's report are required.

Membership of parallel organisations could be seen as supporting evidence, such as the Association of Photographers (AoP) or the Chartered Management Institute (CMI). Other organisations may be considered on their merit.

## NATIONAL OCCUPATIONAL STANDARDS

The National Occupational Standards (NOS) for Photo Imaging is developed and maintained via government funding by Creative Skillset. The Photo Imaging NOS is supported by an industry steering group and through widespread industry consultation. See: Photo Imaging National Occupational Standards, Creative Skillset, February 2013. The Qualifications Board for the Creative Industries will reference this where appropriate.

## QUALIFICATIONS BOARD FOR THE CREATIVE INDUSTRIES

The Qualifications Board will consider applications for all Qualifications. Membership of this Qualifications Board will be determined by the Council of The Royal Photographic Society and will consist of members who hold suitable academic qualifications and/or RPS Distinctions.

The Qualifications Board for the Creative Industries recommends successful candidates for the appropriate qualification to the Council of the Royal Photographic Society. In cases of not being recommended the Qualifications Board will give clear reasons to the candidate and, where appropriate, guidance and advice as to how a future application should be made.

Contact details [qualifications@rps.org](mailto:qualifications@rps.org)

## IMAGING SCIENCE QUALIFICATIONS

**Photographic and imaging techniques are used increasingly in practically all walks of life; the image is as important as the printed word. The science and technology that make this possible come from imaging scientists working in a wide range of disciplines and applications. To recognise achievements in this field, and to enhance career prospects by recognising professional competence, The Royal Photographic Society offers professional Imaging Scientist Qualifications.**

These provide a structure leading to professional qualifications for engineers, scientists and technologists whose professional activities are concerned with scientific imaging, quantitative or mechanistic aspects of imaging systems or their applications. They are recognised by the imaging and science community as essential benchmark qualifications benefiting all sections of the imaging world. The relevant academic disciplines (scientific imaging, chemistry, engineering, physics, computer science, imaging science, colour science etc.) and their applications will be interpreted as widely as possible.

Those members who acquire an Imaging Scientist Qualification will receive additionally a Society Distinction. In common with most bodies awarding vocational qualifications, ISQ status only continues whilst the person is professionally active, whether in full time employment or fully retired and is a member of The Society. Professional activity includes one (or more) of the following:

- Professional activity (e.g. involvement in a professional body by serving on committees, attending meetings, mentoring).
- Work based learning (e.g. consultancy, supervising staff/students, external examining, reflective practice).
- Formal/Educational (e.g. writing articles/papers, further education).
- Self-directed learning (e.g. reading journals, reviewing books/refereeing articles).
- Other (e.g. voluntary work, public service).
- Members who terminate qualified membership, on ceasing to be professionally active, may retain The Society Distinction as long as they remain paid up members of The Society.

### QUALIFICATIONS ARE AWARDED AT FOUR LEVELS:

- **Level 1 (QIS & LRPS) Qualified Imaging Scientist & Licentiate:** for those with academic qualifications below degree level.
- **Level 2 (GIS & ARPS) Graduate Imaging Scientist & Associate:** for those with a first degree.
- **Level 3 (AIS & ARPS) Accredited Imaging Scientist & Associate:** for those with postgraduate experience as imaging scientists.
- **Level 4 (ASIS & FRPS) Accredited Senior Imaging Scientist & Fellowship:** the senior professional qualification.

Candidates with a valid claim for entry to a higher level need not proceed through the lower levels.

### EVIDENCE

- The evidence required in support of applications for Qualifications will normally be in four parts:
- Documentary evidence of prior academic qualifications. In certain cases this requirement may be replaced by a longer period of relevant experience.
- A statement of experience as a professional imaging scientist.
- A full curriculum vitae.
- Statements from referees which will allow the extent, level, scope, and experience of the candidate in imaging science to be assessed. Where a mentor (see supervision below) has been appointed, his/her report must be included.

### STANDARDS

For each level of Qualification there are three basic requirements. The descriptions below are not prescriptive but are intended to give a general indication of the level required.

## QUALIFIED IMAGING SCIENTIST & LICENTIATE (QIS & LRPS)

- For this level there is a minimum age of 21 years.
- BTEC HND in engineering or science.
- One year of relevant experience. Where the candidate has not satisfied the BTEC HND requirement, four years of relevant experience will be accepted instead.
- Normally; the candidate will have performed work of a non-routine nature, which may have been directed by a senior colleague, and have produced accurate records and simple internal reports.

## GRADUATE IMAGING SCIENTIST & ASSOCIATE (GIS & ARPS)

- A suitable degree in engineering or science.
- One year of relevant experience where the candidate has an honours degree and two years of relevant experience where the candidate has a pass degree.
- Normally; the candidate will have made a useful contribution to the work of a team of scientists and may have directed the work of a technician.

## ACCREDITED IMAGING SCIENTIST & ASSOCIATE (AIS & ARPS)

- Five years of relevant experience post QIS or three years of relevant experience post GIS. Where the candidate has neither qualification, nine years of relevant experience will be accepted instead.
- As GIS but more evidence reflecting the years involved. Normally, the candidate will have generated and completed an individual project, such as a postgraduate thesis, and will have written internal reports and/or published refereed papers.

The Qualifications Board will expect to see evidence of independent work.

## C1.3.4 ACCREDITED SENIOR IMAGING SCIENTIST & FELLOW (ASIS & FRPS)

NOTE: The ASIS qualification was conceived as being equivalent to having Chartered status.

- Five years of relevant experience post AIS. Alternatively, nine years of relevant experience post GIS or eleven years post QIS. Where the candidate has none of the above qualifications, fourteen years of relevant experience will be accepted instead.
- Individual work of a high standard, which has shown originality. The Qualifications Board will expect to see evidence of a broad involvement in imaging science beyond a narrow specialism.

## EXEMPTIONS

Members of The Royal Photographic Society who are also members of other professional or learned bodies and hold equivalent qualifications may apply for AIS (e.g. MRSC, or MInstP) or for ASIS (e.g. FRSC, or FInstP) provided that they have a sufficient period of appropriate imaging science work experience. In these cases, only evidence of the exempting qualification, a statement of relevant experience, a curriculum vitae and an independent referee's report are required.

In cases where the candidate's work is confidential, the mentor's report may provide the major or sole evidence.

Note: It is the responsibility of the candidate to identify and engage with a suitably qualified mentor and notify The Society for approval.

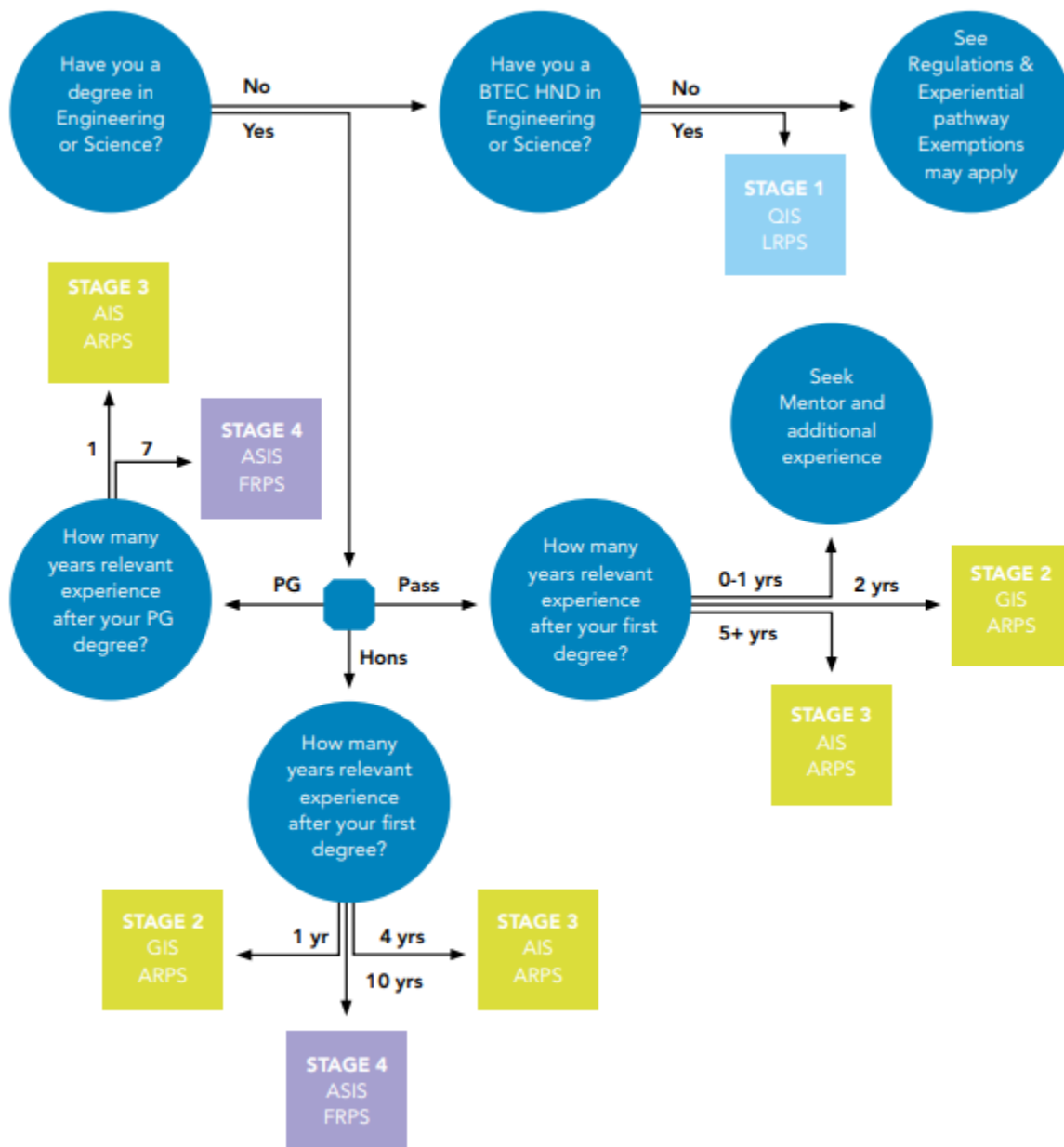
## QUALIFICATIONS BOARD FOR IMAGING SCIENCE

The Qualifications Board will consider applications for all Qualifications. Membership of the Qualifications Board will be determined by the Council of The Royal Photographic Society and will consist of members who hold an ASIS Qualification. The Qualifications Board will be responsible for the recognition of academic courses.

In cases of not being recommended the Qualifications Board will give clear reasons to the candidate and, where appropriate, guidance and advice as to how a future application should be made.

Contact details [qualifications@rps.org](mailto:qualifications@rps.org)

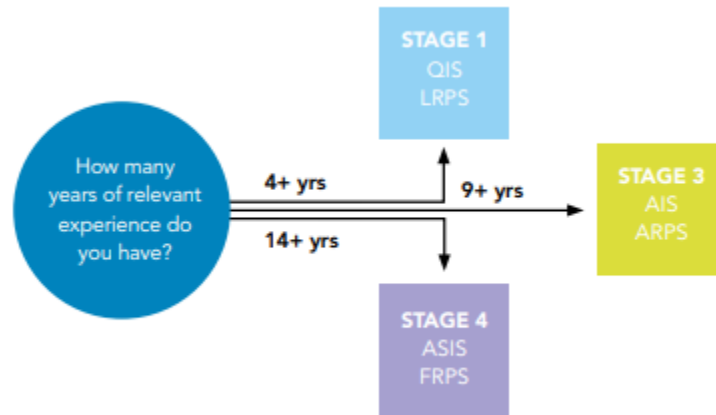
# PATHWAYS TO IMAGING SCIENTIST QUALIFICATIONS



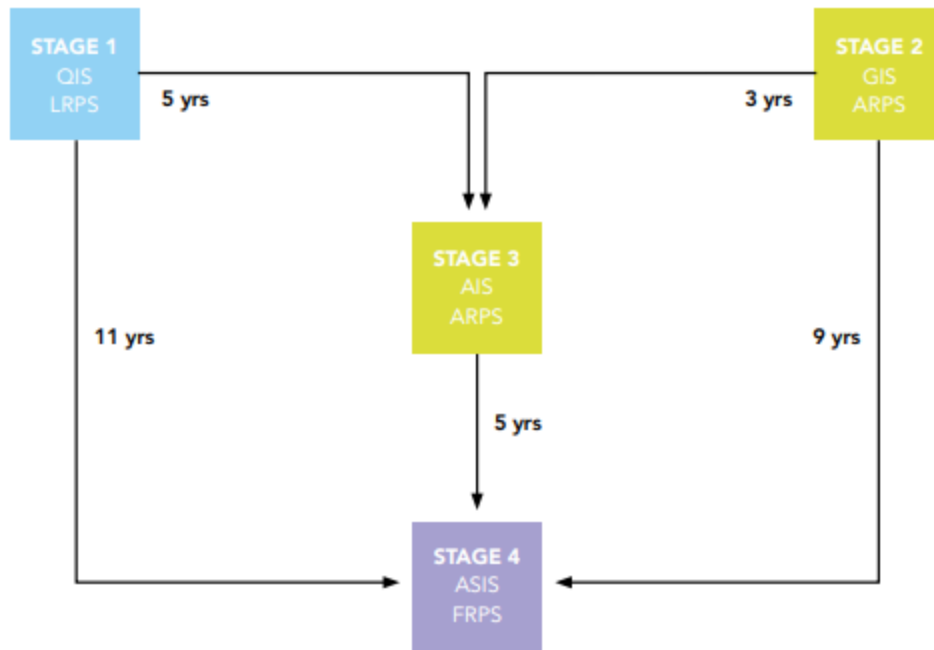
**LEVEL 1:** Qualified Imaging Scientist & Licentiate (QIS & LRPS)  
**LEVEL 2:** Graduate Imaging Scientist & Associate (GIS & ARPS)  
**LEVEL 3:** Accredited Imaging Scientist & Associate (AIS & ARPS)  
**LEVEL 4:** Accredited Senior Imaging Scientist & Fellow (ASIS & FRPS)  
**PG:** Postgraduate (Doctorate). For Masters add 2 years



# EXPERIENTIAL PATHWAYS TO IMAGING SCIENTIST QUALIFICATIONS (FOR THOSE WITHOUT FORMAL DEGREE QUALIFICATIONS)



## PROGRESS BETWEEN LEVELS



- LEVEL 1:** Qualified Imaging Scientist & Licentiate (QIS & LRPS)
- LEVEL 2:** Graduate Imaging Scientist & Associate (GIS & ARPS)
- LEVEL 3:** Accredited Imaging Scientist & Associate (AIS & ARPS)
- LEVEL 4:** Accredited Senior Imaging Scientist & Fellow (ASIS & FRPS)
- PG:** Postgraduate (Doctorate). For Masters add 2 years